

Number **D/517/2015**
Location 12-14 Sheffield Street PRESTON VIC 3072
Description Medium density development comprising the construction of **nine (9), double storey dwellings** and **reduction of the standard visitor car parking** requirement as shown in the plans accompanying the the application.

land size 2 blocks = 1660 sq m (details found via <http://gis.darebin.org>)
existing family homes here <https://www.google.com.au/maps>

Summary replace family home with 9 double storey units = 9x3 bed (124-131 sqm)
L1: 3x bed. windowless bathroom and ensuite
GND: open plan kitchen/lounge/living (approx 5x6 m2)
parking: single garage (25 sq m) and tandem driveway
No visitor parking

Parking http://planningschemes.dpcd.vic.gov.au/schemes/vpps/52_06.pdf
0 spaces, rule is 1 space to each 1 or 2 bed dwelling
18 spaces, rule is 2 space to each 3 or more bed dwelling
1 spaces, rule is 1 space for visitors to every 5 dwellings
19 in total, and plans show 18 spaces
INSUFFICIENT PARKING for visitors

who clarke hopkins clarke 115 sackvile st collingwood

HOWTO OBJECT = CLOSED OCTOBER 2015

+++++

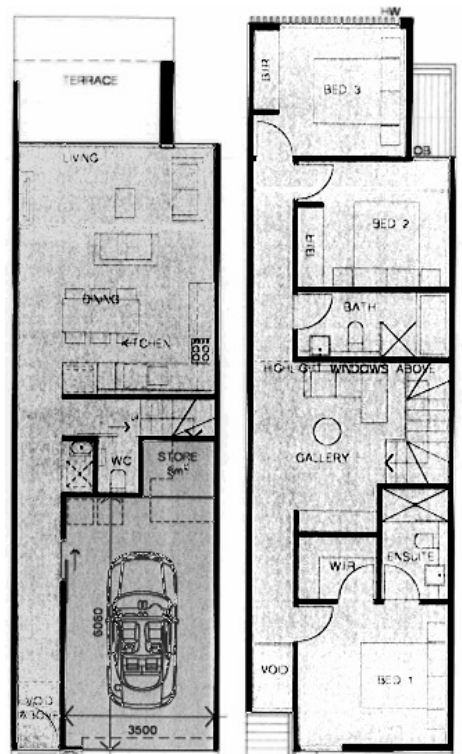
- (1) objection form first page, top half, add your name and contact details
 - (2) last page, lower section, add your name or signature and todays date
 - (3) save the file, maybe add todays date ddmmyy eg. Darebin_objection_ddmmyy.doc
 - (3) Send to Darebin town planning by email, fax, mail or in person
- Post to: PO BOX 91 Preston 3072
Fax 8470 8877 ATTENTION: TOWN PLANNING
email: townplanning@darebin.vic.gov.au

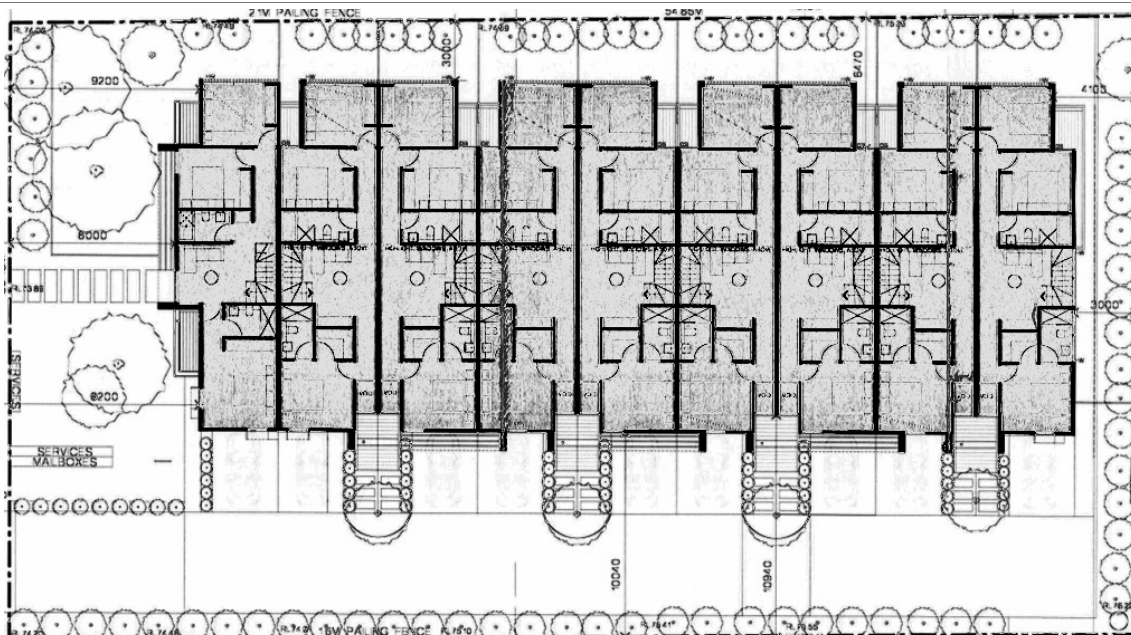
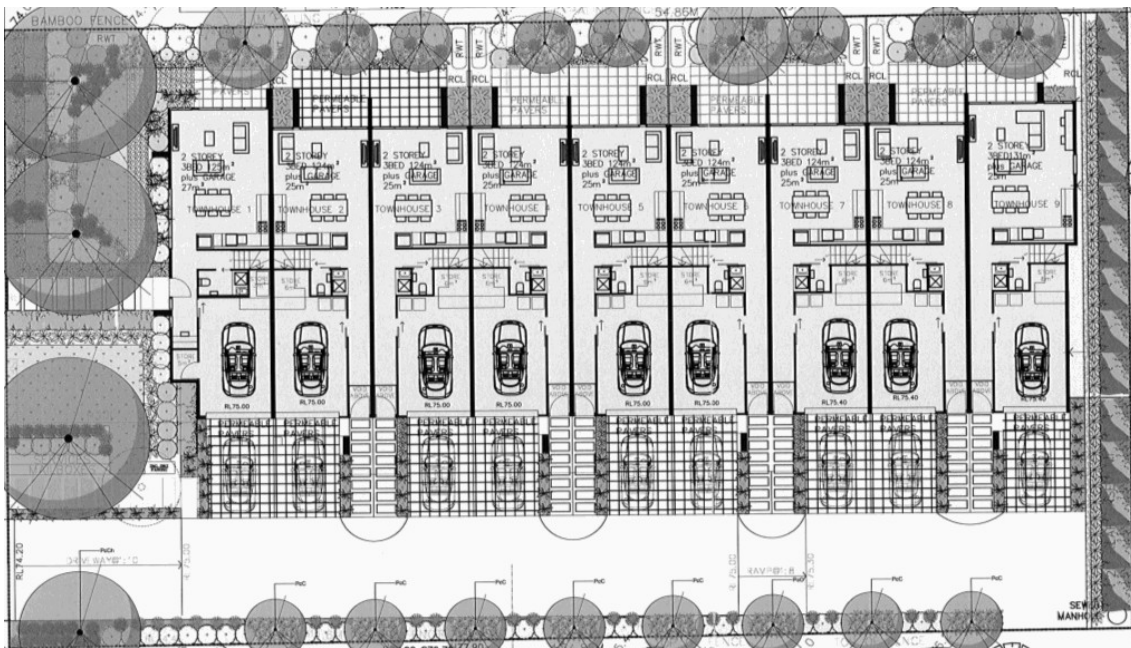
see email example below

+++++

-email: townplanning@darebin.vic.gov.au
subject: objection to D/517/2015 12-14 Sheffield St Preston
+++++

Dear Darebin Planning
Please find attached an objection to this planning proposal.
Yours Sincerely





D/517/2015 12-14 Sheffield St Preston